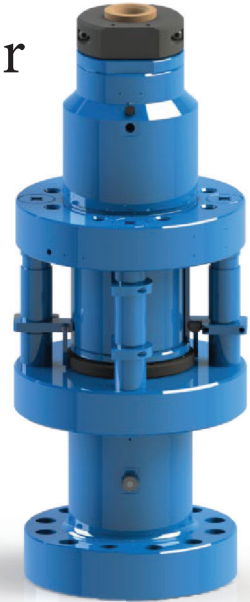




4-1/16” 15K Conventional Stripper Packer



Specifications

Working Pressure	15,000 psi max
Service	materials conforms to NACE
Bore	4-1/16”
Hydraulic Pressure	3,000 psi max
Tubing Sizes	1” to 2-7/8”
Weight & Height	1200 Lb, 45.8” tall
Operating Temperature	-40°F to 320°F (-40°C to 160°C)
Top Connection	Eight 1-1/4” UNC Tapped holes on a 13” Bolt Circle
Bottom Connection	5-1/8” 15K BX-169 Flange
Hydraulic Connections	1/4” NPT
Hydraulic Couplers	Customer preference

* Nexus is able to manufacture a variety of Stripper Packer connections. Contact sales for further options.

