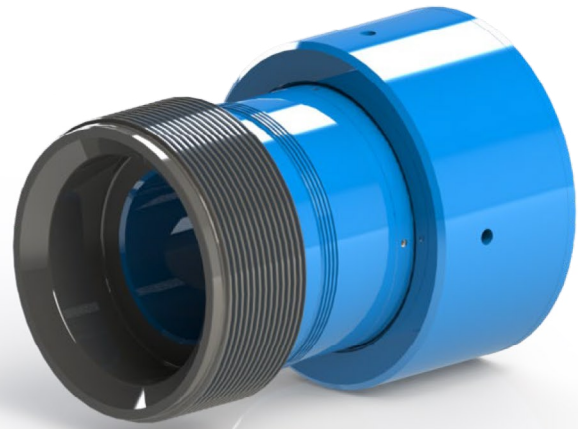


Crossovers are used to connect different sizes of pressure control equipment together. They are available in any combination (size and pressure rating) of threaded union.



Specifications

Working Pressure	2,000 to 15,000 psi
Service	Standard, H2S
Bore	2-1/16" to 7-1/16"
Available Configurations *	Nexus, Otis, Bowen, Flange
Operating Temperature	-40°F to 320°F (-40°C to 160°C)

* Nexus is able to manufacture a variety of Crossover configurations to suite your needs. Contact sales for further options.

